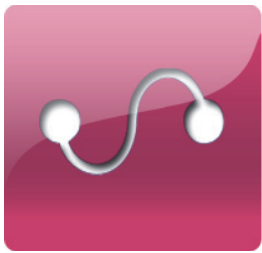


MCL-LINK V3

DEPLOYMENT FOR REAL BUSINESS

DATA INTEGRITY



Ensure your business data integrity through the guaranteed delivery of batch uploads and downloads of mobile worker data — physical inventories, sales orders, price lists, task lists, proofs of delivery.

FEATURES

Guaranteed Data Delivery

MCL's robust protocol guarantees data delivery between MCL mobile worker applications and your host systems when using MCL-Link.

Minimized Communications Traffic

MCL-Link exchanges only data and applications. Traffic and bandwidth usage is thus minimized, as is communication-time between the mobile terminal and the host, increasing device response times dramatically.

Remote Project Update

Use MCL-Link to remotely update the MCL mobile worker application on one, several, or all of your devices.

MCL-Link

MCL-Link is MCL-Collection's communications server for direct connect serial or modem dial-up, batch data communications. MCL-Link manages your deployment of mobile terminals running MCL applications in batch, non-concurrent user environments. It:

- Ensures data delivery
- Automates uploads and downloads of applications and application data
- Handles data exchanges between the mobile terminal and your host systems
- Manages your batch terminal applications

MCL-Collection's architecture is a layered approach enabling MCL-Link to use multiple MCL-Bridges concurrently and thereby allowing a mobile worker to update, for example, SAP, Oracle and an Excel spreadsheet database all at the same time, via MCL-Link. The result is that in an MCL-Link point-to-point communications environment, your mobile worker applications have all the same host access as your networked mobile terminals.

Minimizing Cost of Ownership

In addition to MCL-Link's unsurpassed communications flexibility which allows you to tailor your communications sessions to suit your operations,

MCL-Link has several features that minimize the cost of ownership of your batch application deployment.

- Guaranteed Data Delivery
- Minimized Data Communications Traffic
- Remote Project Update

Guaranteed Data Delivery

MCL-Link has an ACK/NAK communications protocol with packet level retries and checksums. Thanks to this robust protocol, MCL guarantees data delivery between MCL mobile worker applications and your host systems when you use MCL-Link.

Minimized Data Communications Traffic

By exchanging only data and applications, MCL-Link minimizes traffic, bandwidth usage and the connection time between the mobile terminal and MCL-Link. This approach gives the best possible device response times to minimize bandwidth usage, and thereby minimizing operating costs relating to telephone charges for remote workers using dial-up modem data communications.



Communications

Use MCL-Link for mobile applications which communicate with a host via:

- RS232 Serial Communication
- Modem dial-Up
- USB

Flexible, Modular Deployment Architecture

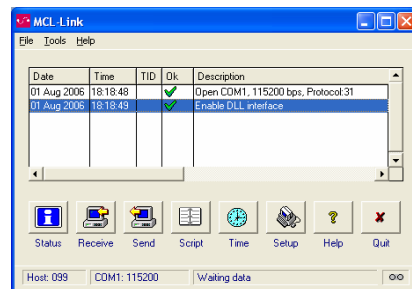
Easy access to:

- ODBC compliant Databases
- Warehouse Management Systems (WMS)
- Enterprise Resource Planning systems (ERP)

Remote Project Update

In addition to the normal exchange of operational data, you also need to manage the application running on your terminals.

MCL-Link offers local and remote automatic application updating for mobile terminals. Individual mobile terminals, groups of mobile terminals or all known mobile terminals may be targeted to receive a new version of an MCL application. This allows you to maintain accurate application version control across your mobile terminal population.



Remote Worker Deployment

Route accounting, direct store delivery, physical inventory, retail returns, competitive price surveys, electronic ordering, dashboard sales product lookup and field service are all typical applications using batch data collection terminals. The applications that run on these devices involve local or remote, occasionally connected, point-to-point data communications with:

Daily downloads, such as:

- Mobile worker task lists
- Lookup tables
- Price Lists
- Images
- Label formats

Daily uploads of collected data, such as:

- Data files and data records
- Physical inventory
- Sales orders
- Purchase orders
- Proofs of delivery

Periodic downloads, such as:

- Application updates
- New Applications

The integrity of your batch transfers, and consequently the integrity of your business data is dependent upon successful data delivery.

How is this data integrity achieved?

The answer is MCL-Link.

MCL-LINK MINIMUM REQUIREMENTS

Specification	Requirement (min/recommend)
Operating System	Windows XP Windows 2000 Windows 98
Processor Speed (Mhz)	233/300 133 or higher 486XD 66MHZ
RAM (MB)	64/128 64 16/24
Free Hard Disk Space (MB)	80 80 80
Display	800/600 VGA or higher VGA or higher

Copyright © 2008 MCL Technologies. All Rights Reserved

Microsoft, Windows, Windows XP, Windows 2000, and Windows 98 are trademarks or registered trademarks of Microsoft Corporation in the United States and/or other countries.

All other trademarks are the property of their respective owners. All specifications, terms and descriptions of products and services are subject to change without notice or recourse.

MCL Technologies

Chaussée de Bruxelles 572

1410 Waterloo • Belgium

Tel.: + 32 2 724 35 00

Fax: + 32 2 724 35 04

<http://www.mcl-collection.com>



Marketing@mcl-collection.com

Support@mcl-collection.com

Competence.USA@mcl-collection.com

Competence.UK@mcl-collection.com

Competence.NL@mcl-colleciton.com